

LA COSTRUZIONE DELLA CASA

1. INIZIO SCAVO



2. SCAVO COMPLETATO



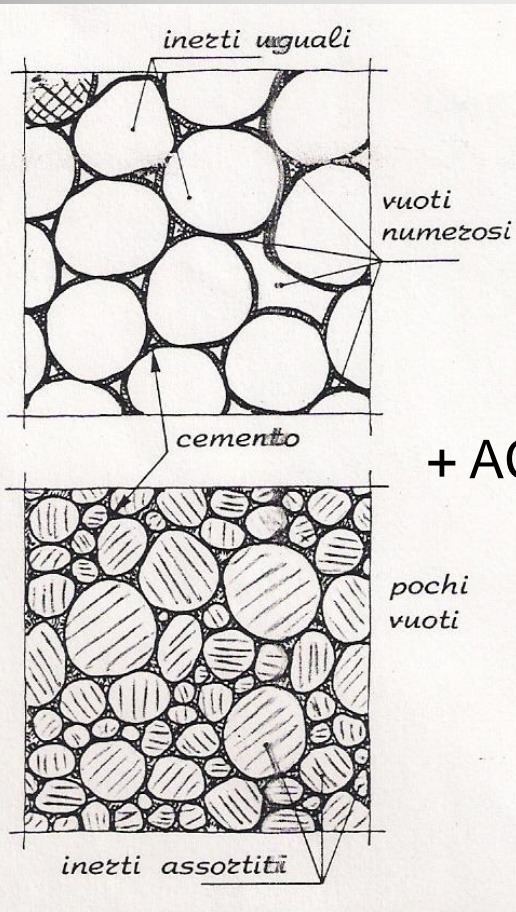
3. MAGRONE



4. FONDAZIONI



COME SI FA IL CALCESTRUZZO



+ ACQUA +



CEMENTO

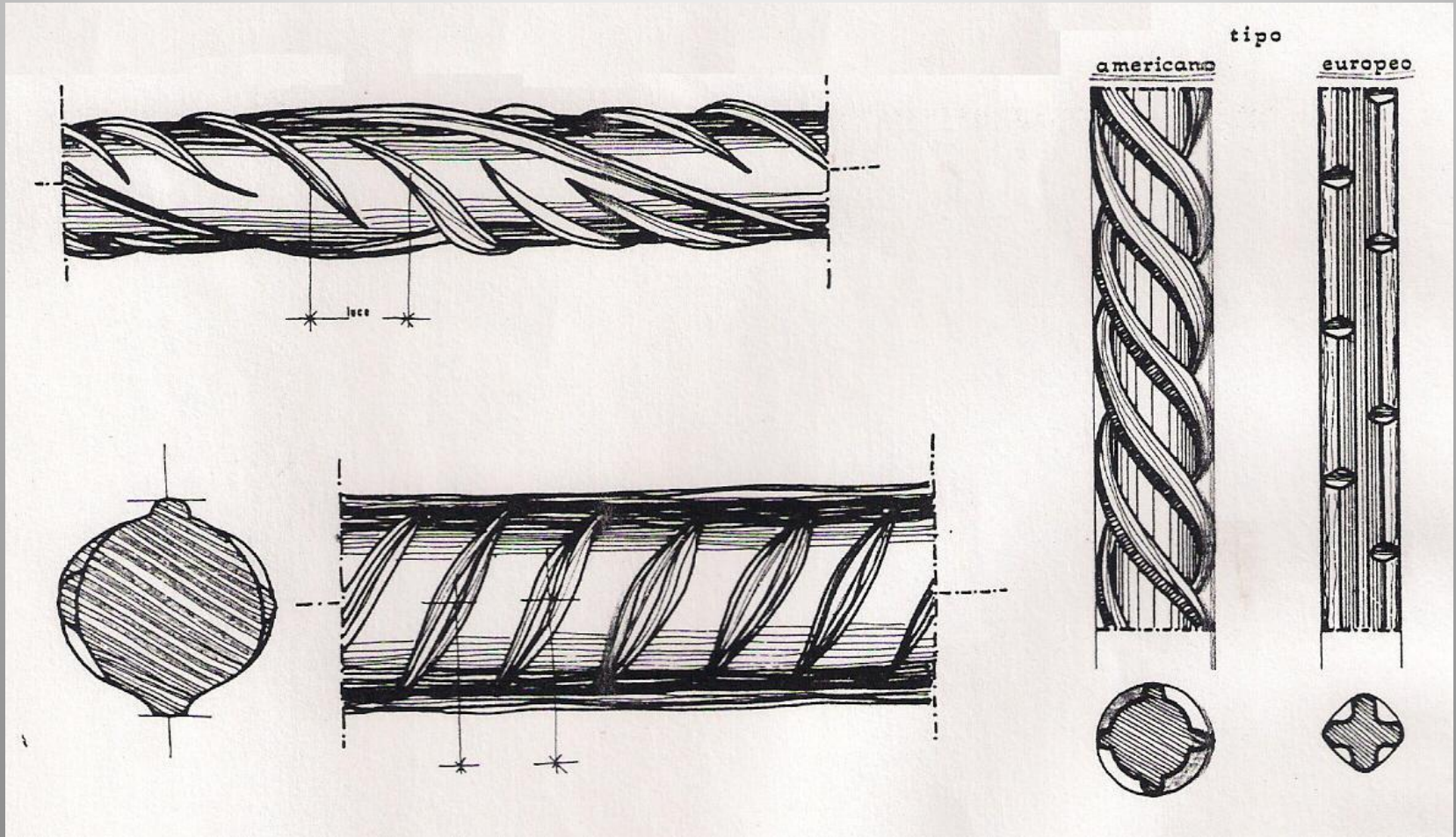
=



CALCESTRUZZO

**GHIAIA DI
GRANULOMETRIA
MISTA**

BARRE DI ACCIAIO AD ADERENZA MIGLIORATA



5. FONDAZIONI



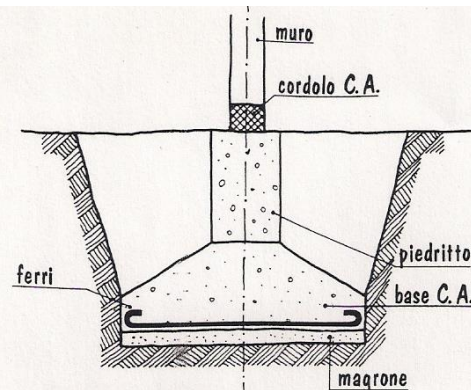
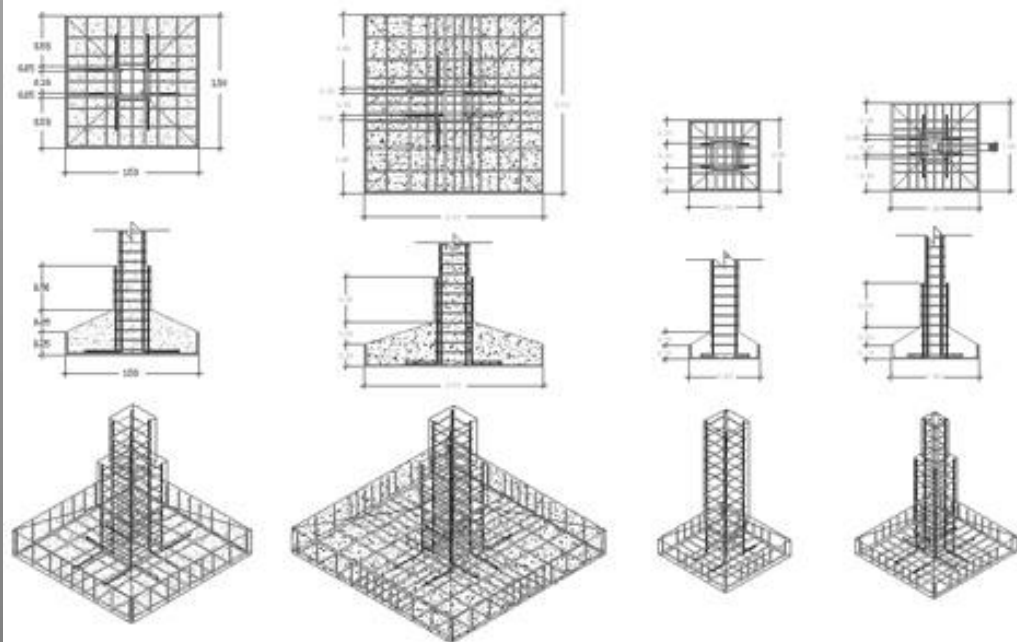
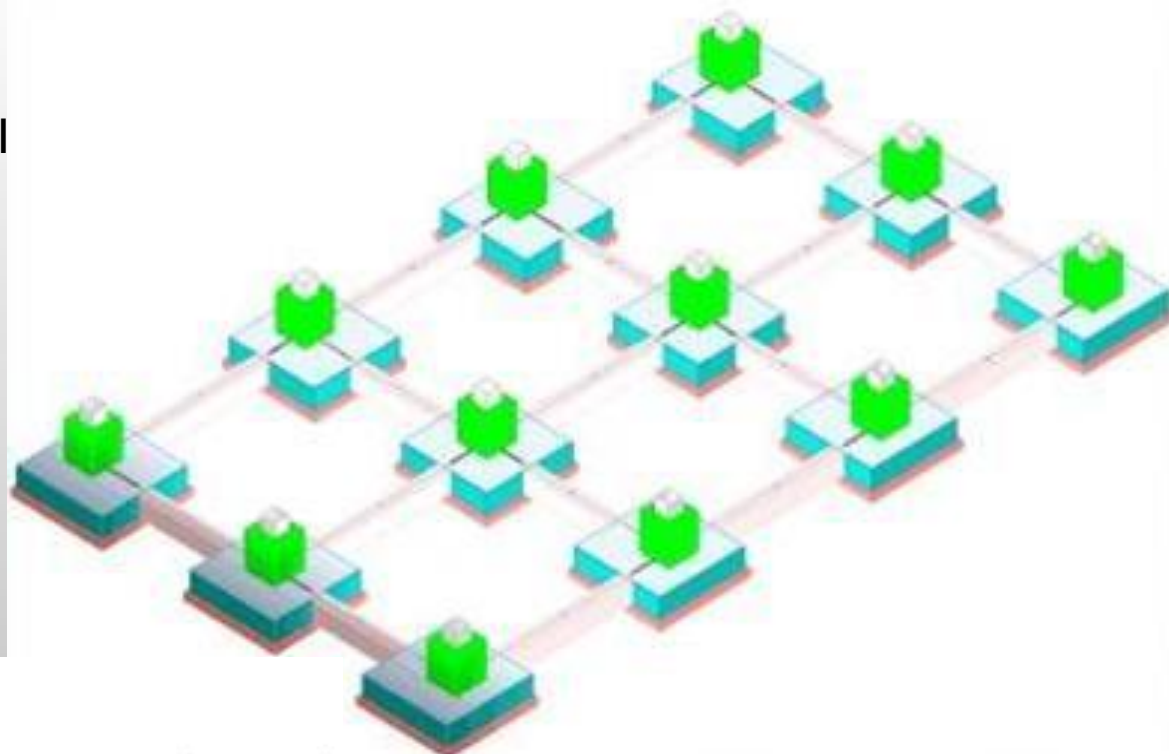
6. FONDAZIONI



7. FONDAZIONI



6.1. FONDAZIONI A PLINTI



a) sezione fondazione

8. GETTO FONDAZIONI



9. MURI INTERRATO CANTINA



10. MURI INTERRATO CANTINA



11. IMPERMEABILIZZAZIONE





13. ULTERIORE IMPERMEABILIZZAZIONE



12. SCHIZZI



14. CANALIZZAZIONI IMPIANTI



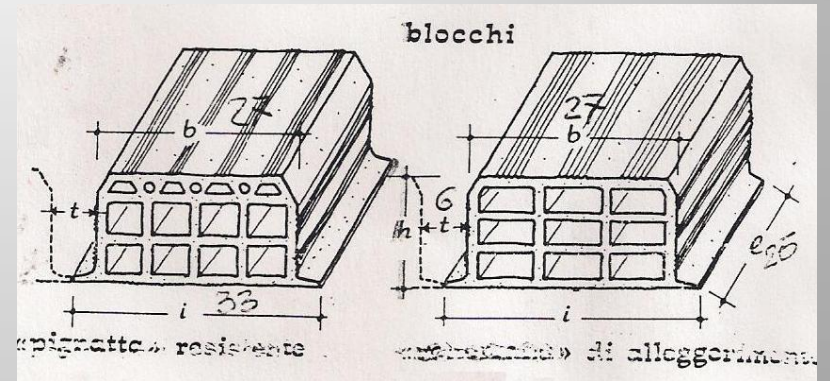
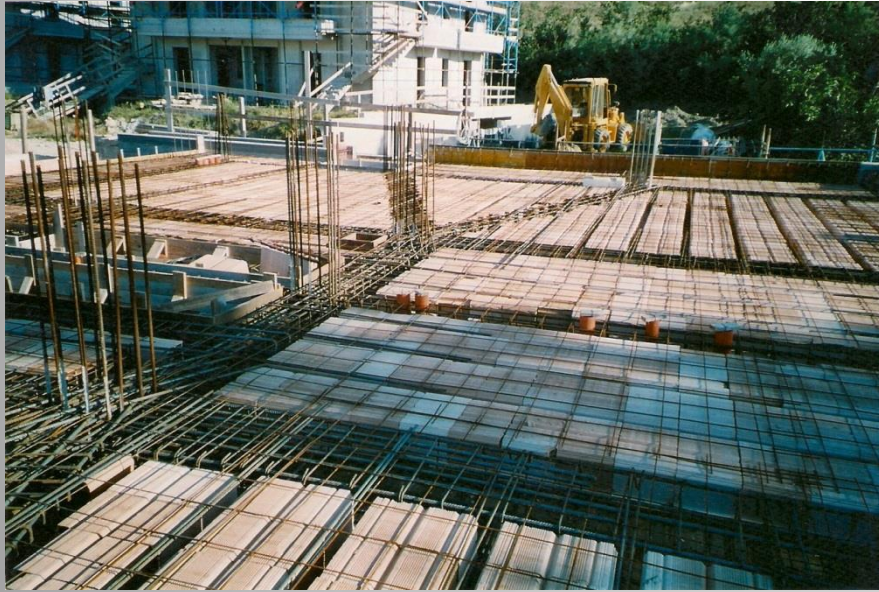
15. REINTERRO



15. ARMATURA SOLAIO



15. ARMATURA SOLAIO



17. FERRI SOLAIO



16. SCALA INTERNA

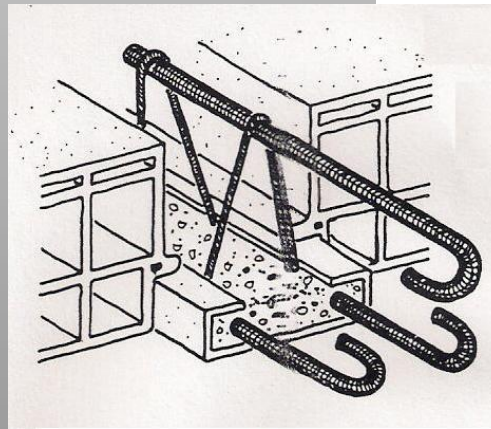
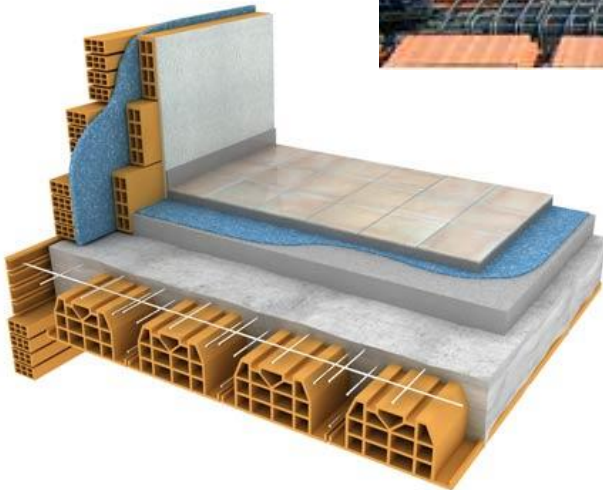


18. SOLAIO PT



16. SISTEMAZIONE GETTO SOLAIO





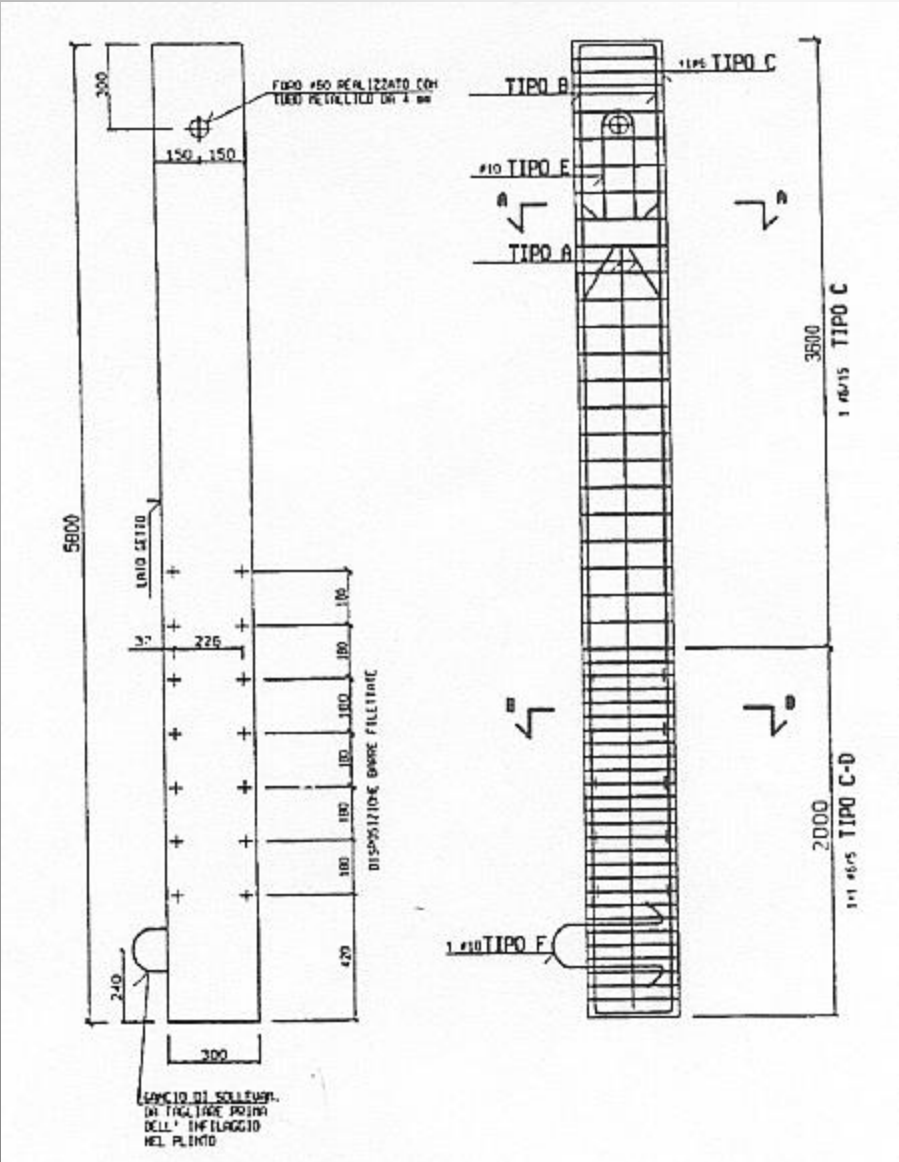
19. PILASTRI PT



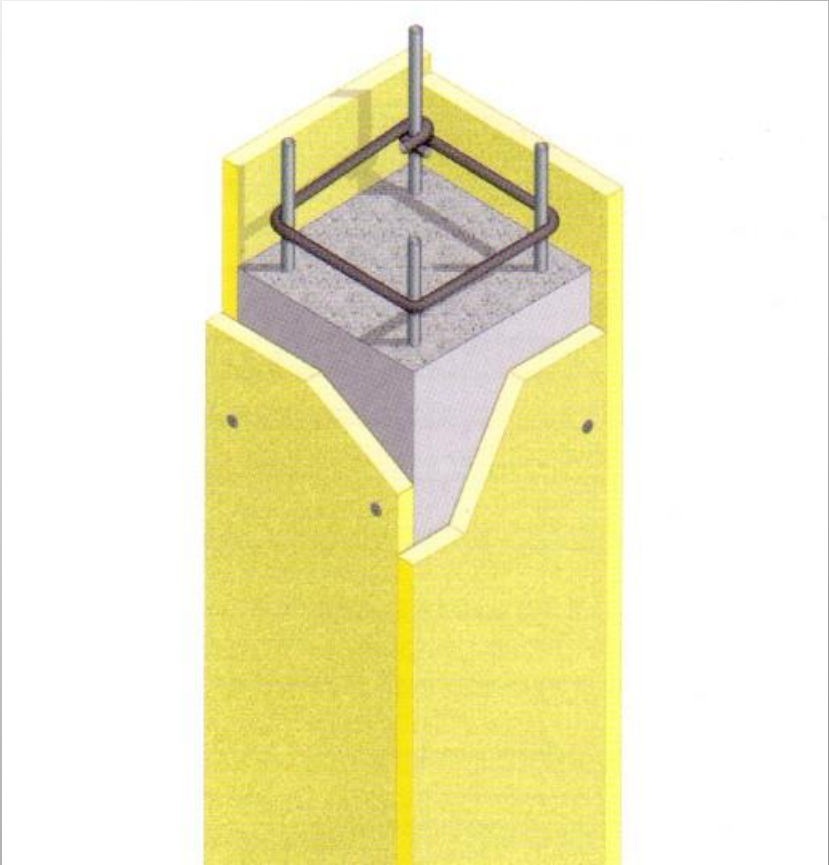
20. PILASTRI PT



20.1. ESECUTIVO PILASTRO

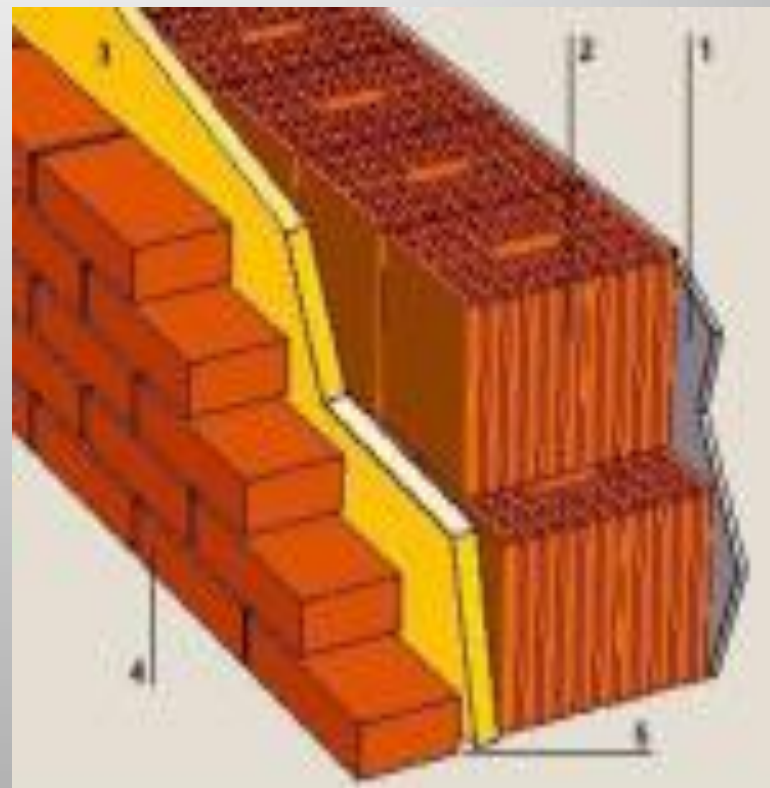
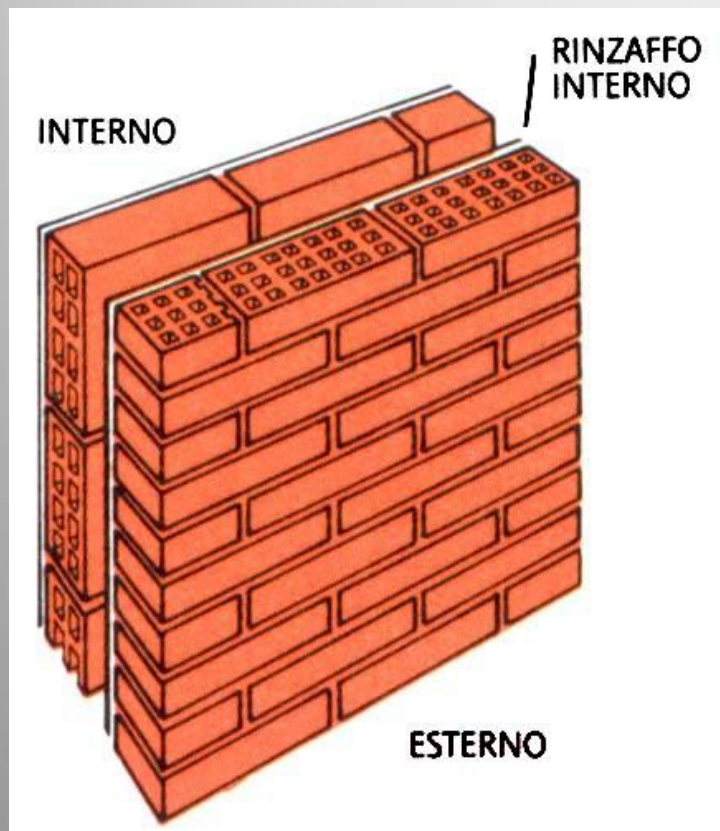


20.2. PILASTRO DA DISARMARE



21. MURI PT





22. CORREA P1



23. SOLETTA P1



24. ESTERNO





25. SOLETTA P1



26. MURI P1



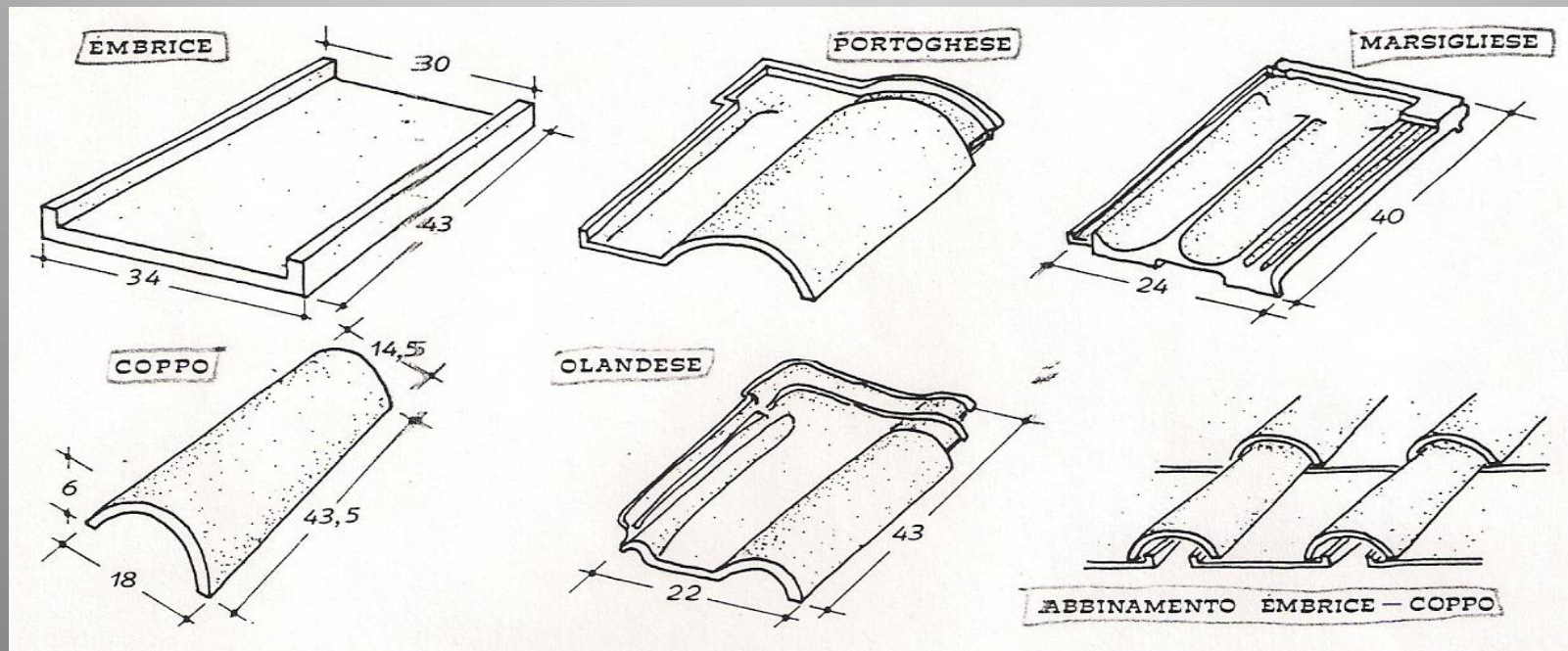
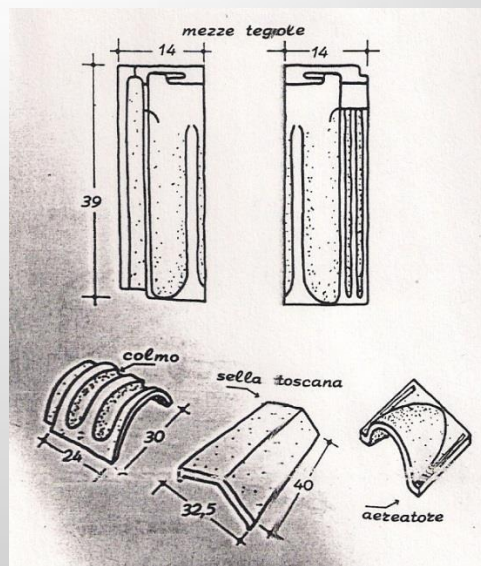
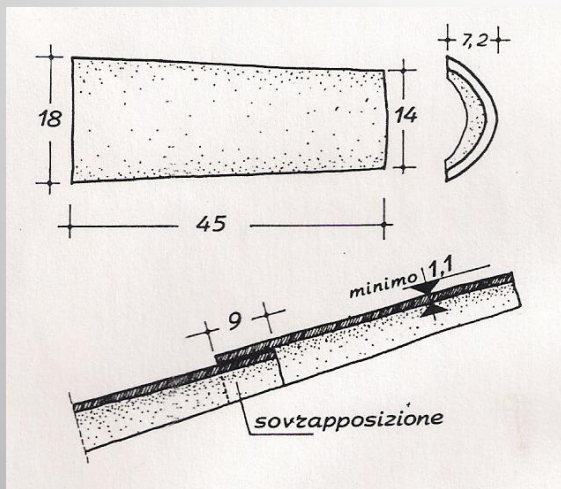
27. MURI P1





28. SOLAIO DI COPERTURA IN LEGNO





29. SCHELETRO FINALE

